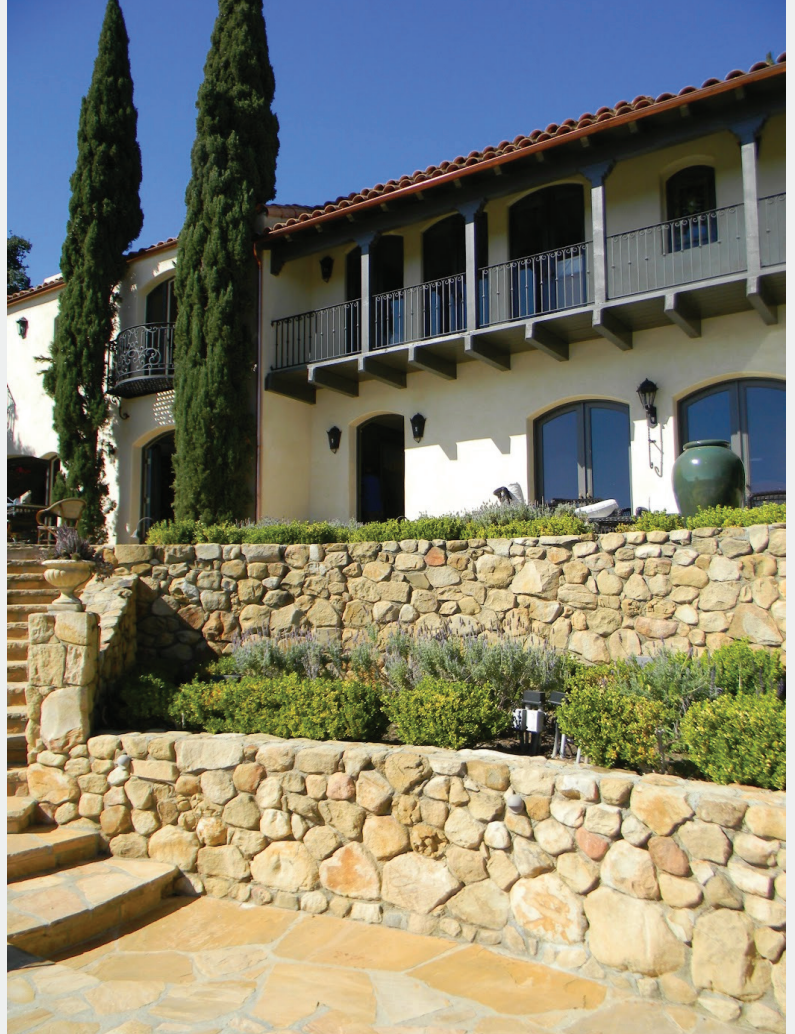




# Santa Barbara Gold Sandstone



## Product Description and Specification

<b>Name:</b>	Santa Barbara Gold Sandstone
<b>Origin:</b>	California Central Coast quarry
<b>Geology:</b>	Sandstone
<b>Color:</b>	Gold, tan, brown and some chocolate colors
<b>Description:</b>	<p>Santa Barbara Sandstone aka Montecito Rock features gold, tan, brown and some chocolate colors, very similar to Oklahoma Sandstone Wall Rock. LEED material as it is the by product from regular foothill construction works and flood channel clean up work.</p> <p>This is the chiseled stone used for walls and building veneer scene at most of the high-end hotels, resorts and estates of Hope Ranch, Montecito and Santa Barbara and outlying communities. As rock goes this is a soft material that is easily worked by skilled masons into beautiful building and wall rock. Most of the sandstone sold in Southern California is from the Ventura County mountains.</p> <p>What sets Santa Barbara Sandstone apart from Malibu Rock is the lack of green sandstone in it. Malibu Rock, cobbles, and boulders have a high amount of pale green sandstone in the material, this rarely occurs in the Santa Barbara Sandstone formations.</p>

**Descripción:**

La arenisca de Santa Bárbara, también conocida como Roca Montecito, presenta colores dorados, tostados, marrones y algunos chocolates, muy similares a la arenisca de Oklahoma. Es un material con certificación LEED, ya que es un subproducto de las obras de construcción habituales en las laderas y de la limpieza de canales de inundación. Esta es la piedra cincelada que se utiliza para muros y revestimientos de edificios en la mayoría de los hoteles, complejos turísticos y fincas de lujo de Hope Ranch, Montecito, Santa Bárbara y comunidades periféricas. En cuanto a la roca, es un material blando que los albañiles expertos pueden trabajar fácilmente para obtener hermosas estructuras y muros. La mayor parte de la arenisca que se vende en el sur de California proviene de las montañas del condado de Ventura.

Lo que distingue a la arenisca de Santa Bárbara de la Roca Malibú es la ausencia de arenisca verde. La Roca Malibú, los cantos rodados y las rocas grandes contienen una gran cantidad de arenisca verde pálida, algo que rara vez ocurre en las formaciones de arenisca de Santa Bárbara.

**Size:**

Commonly available from 12 inches through 4 feet, specimens through 6 feet

**Transportation:**

Large orders shipped in End-dump and Super 10 trucks. Smaller orders shipped on flatbeds

## Boulder Sizes & Weights

LENGTH X WIDTH	APPROX. WEIGHT	APPROX. WEIGHT
1.5 ft X 1.5 ft	0.089 TONS	178 LBS
2.0 ft X 1.5 ft	0.17 TONS	340 LBS
2.0 ft X 2.0 ft	0.23 TONS	460 LBS
2.5 ft X 2.0 ft	0.29 TONS	580 LBS
2.5 ft X 2.5 ft	0.49 TONS	980 LBS
3.0 ft X 2.0 ft	0.49 TONS	980 LBS
3.0 ft X 2.5 ft	0.59 TONS	1180 LBS
3.0 ft X 3.0 ft	0.89 TONS	1780 LBS
3.5 ft X 2.5 ft	0.89 TONS	1780 LBS
3.5 ft X 3.0 ft	1.09 TONS	2180 LBS
4.0 ft X 3.0 ft	1.19 TONS	2380 LBS
4.0 ft X 3.5 ft	1.59 TONS	3180 LBS
4.5 ft X 3.0 ft	1.59 TONS	3180 LBS
4.5 ft X 3.5 ft	1.89 TONS	3780 LBS
4.5 ft X 4.0 ft	2.39 TONS	4780 LBS
5.0 ft X 4.0 ft	2.74 TONS	5480 LBS



For further queries please contact us today

📞 626 263 0531  
800 215 7372

✉️ [sales@earthstonerock.com](mailto:sales@earthstonerock.com)